



Home 2 Window Coverings and More



- Guest Room Dual Roller Shades**
- ADA Guest Room Dual Roller Shades - Motorized**
- Breakfast Counter Curtain**
- Lobby Roller Shades**
- Fitness Room Roller Shades**
- Corridor Roman Shades**
- BOH Shades**
- Custom Divider Curtains**
- Custom Closet Curtains**
- Boxspring Covers**



TYPICAL ROOMS

GR-400 Roller Shade @ Guestroom

Description: Manual Blackout Roller Shade @ Guestroom

Dimensions: To be field measured and confirmed by fabricator. Field measurements required for final confirmation of pricing and sizes. Drapery manufacturer to verify all yardage and field measurements prior to manufacturing roller shade.

Ceiling Height: Typ. 8'-0" VIF

Opening Size: 5'-0" W x 6'-2" H VIF

Mounting Method: Outside mount at top of sill, provide 4" overlap on each side of opening. Fascia headbox should be mounted above the window.

Components: (1) Fascia: 4" Aluminum, Color: White, length: VIF(2) Side Channels and Brackets, Color: White, extend to window sill

Shade Style: Blackout WCW Clutch Roller Shade

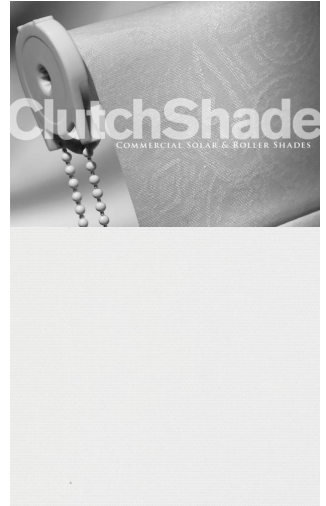
Shade Dimensions: Blackout: 5'-5" W x 6'-4" H VIF Sheer: 5'-0" W x 6'-1" H VIF

Chain: Stainless steel beaded chain

Fabric Details: *All fabric is inclusive.

Pattern: Meridian, Color: Frost, Fire Rating: NFPA 701-2004, Content: 100% Polyester w/ Acrylic Coating, Width: 118", Repeat: 0", Railroad: No

All materials and methods of construction must comply with all local fire and life safety codes for use in hotels and other public spaces, and Home2 Suites Brand Standards.



GR-401 Roller Sheer @ Guestroom

Description: Manual Roller Sheer @ Guestroom

Dimensions: To be field measured and confirmed by fabricator. Field measurements required for final confirmation of pricing and sizes. Drapery manufacturer to verify all yardage and field measurements prior to manufacturing roller shade.

Ceiling Height: Typ. 8'-0" VIF

Opening Size: 5'-0" W x 6'-2" H VIF

Mounting Method: Inside mount behind blackout shade (B) GR-400

Shade Style: Sheer WCW Clutch Roller Shade

Shade Dimensions: 4'-1.25" W x 6'-4" H VIF

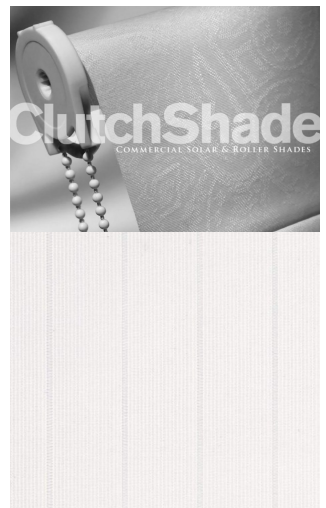
Shade Dimensions: Blackout: 5'-5" W x 6'-4" H VIF Sheer: 5'-0" W x 6'-1" H VIF

Chain: Stainless steel beaded chain

Fabric Details: *All fabric is inclusive.

Pattern: Lumens, Color: White, Fire Rating: NFPA 701-2004, Content: 100% Polyester, Width: 94", Repeat: V: 0.0", H: 0.625", Railroad: No

All materials and methods of construction must comply with all local fire and life safety codes for use in hotels and other public spaces, and Home2 Suites Brand Standards.





ADA ROOMS

GR-402 Motorized Roller Shade @ Accessible Guestroom

Description: Motorized Blackout Roller Shade @ Guestroom

Dimensions: To be field measured and confirmed by fabricator. Field measurements required for final confirmation of pricing and sizes. Drapery manufacturer to verify all yardage and field measurements prior to manufacturing roller shade.

Ceiling Height: Typ. 8'-0" VIF Opening Size: 5'-0" W x 6'-2" H VIF

Mounting Method: Outside mount at top of sill, provide 4" overlap on each side of opening. Fascia headbox should be mounted above the window.

Motor: RTS motor with hardwired power cord and quick disconnect. Controlled by wireless wall switch(es).

Components: (1) Fascia: 4" Aluminum, Color: White, length: VIF(2) Side Channels and Brackets, Color: White, extend to window sill

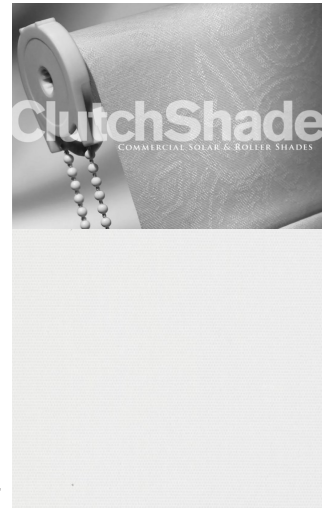
Shade Style: Blackout WCW Clutch Roller Shade

Shade Dimensions: Blackout: 5'-5" W x 6'-4" H VIF Sheer: 5'-0" W x 6'-1" H VIF

Fabric Details: *All fabric is inclusive.

Pattern: Meridian, Color: Frost, Fire Rating: NFPA 701-2004, Content: 100% Polyester w/ Acrylic Coating, Width: 118", Repeat: 0", Railroad: No OR EQUAL

All materials and methods of construction must comply with all local fire and life safety codes for use in hotels and other public spaces, and Home2 Suites Brand Standards.



GR-403 Motorized Roller Sheer @ Accessible Guestroom

Description: Motorized Sheer Roller Sheer @ Accessible Guestroom

Dimensions: To be field measured and confirmed by fabricator. Field measurements required for final confirmation of pricing and sizes. Drapery manufacturer to verify all yardage and field measurements prior to manufacturing roller shade.

Ceiling Height: Typ. 8'-0" VIF Opening Size: 5'-0" W x 6'-2" H VIF

Mounting Method: Outside mount at top of sill, provide 4" overlap on each side of opening. Fascia headbox should be mounted above the window.

Motor: RTS motor with hardwired power cord and quick disconnect. Controlled by wireless wall switch(es).

Components: (1) Fascia: 4" Aluminum, Color: White, length: VIF(2) Side Channels and Brackets, Color: White, extend to window sill

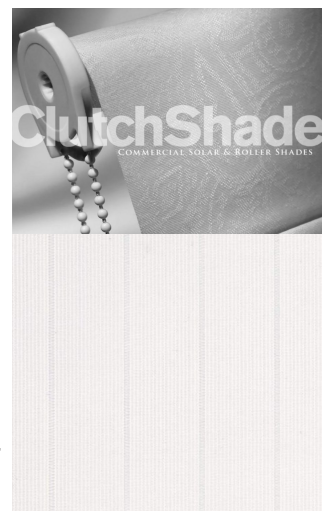
Shade Style: Blackout WCW Clutch Roller Shade

Shade Dimensions: Blackout: 5'-5" W x 6'-4" H VIF Sheer: 5'-0" W x 6'-1" H VIF

Fabric Details: *All fabric is inclusive.

Pattern: Lumens, Color: White, Fire Rating: NFPA 701-2004 100% Polyester, Width: 94", Repeat: V: 0.0", H: 0.625", Railroad: No

All materials and methods of construction must comply with all local fire and life safety codes for use in hotels and other public spaces, and Home2 Suites Brand Standards.





LOBBY AND FITNESS ROOM ROLLER SHADES

PA--400 AND 402 Roller Sheer

Description: Sheer Shade **Roller Sheer**

Description: Manual Roller Sheer Dimensions: To be field measured and confirmed by fabricator. Field measurements required for final confirmation of pricing and sizes. Drapery manufacturer to verify all yardage and field measurements prior to manufacturing roller shade.

Mounting Method: Inside mount behind blackout shade (B) GR-400

Components: (1) Fascia: 4" Aluminum, Color: White, length: VIF(2) ,Brackets, Color: White

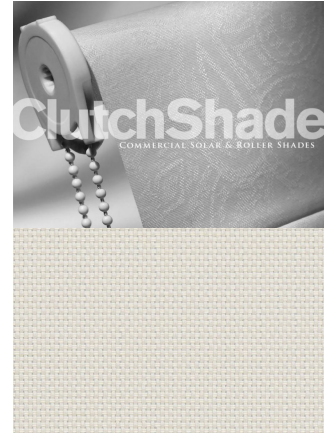
Chain: Stainless steel beaded chain

Fabric Details: *All fabric is inclusive.

3000 Coth 5% Color: White Fire Rating: NFPA 701-2004 TM#1; CA U.S. Title 19 Content: 100% Polyester w/ Acrylic Coating Width: 118" Repeat: 0"

Railroad: No

All materials and methods of construction must comply with all local fire and life safety codes for use in hotels and other public spaces, and Home2 Suites Brand Standards.



BREAKFAST COUNTER DRAPE

PA--403 Breakfast Counter Drape

Description: Ripplefold Panels at Breakfast Area

Style: 2-Way Draw Drapery

Dimensions: To be field measured and confirmed by fabricator. Field measurements required for final confirmation of pricing, sizes, and fabric yardage. Drapery manufacturer to verify all yardage and field measurements prior to manufacturing draperies.

Mounting Method: Ceiling Mounted

Hardware: Size: 3/4" x 3/4" Finish: White Note: Master Carrier to accept attached baton/wand and pass thru track.

Top Treatment Style: Ripple Fold

Fullness: 160%

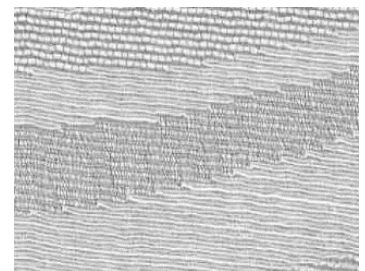
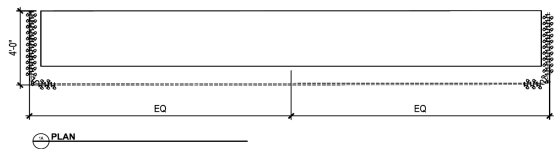
Panel Dimensions: (2) 13-0" W X 8'-0" L, varies - verify onsite

Finished Length: 1" AFF

Hemming: 1" single side hems; 4" double bottom Fabricated with a rolled hem and continuous Ceiling Height: 8'-10" VIF

Fabric Details: Richloom Fabrics, Pattern: Pizzicato, Color: Silver Fire, Rating: NFPA 701, Content: 100% Polyester, Width: 118", Repeat: N/A, Weight: Approx. 99.0 GSM, Railroad: Direction Railroaded *All fabric is inclusive.

All materials and methods of construction must comply with all local fire and life safety codes for use in hotels and other public spaces, and Home2 Suites Brand Standards.





CORRIDOR ROMAN SHADES

PA-404 Roman Shade At Corridor

Description: Roman Shade At Corridor

Dimensions: To be field measured and confirmed by fabricator. Field measurements required for final confirmation of pricing and sizes. Drapery manufacturer to verify all yardage and field measurements prior to manufacturing roman shade.

Ceiling Height: Typ. 8'-0" VIF

Opening Size: 5'-0" W x 6'-2" H VIF

Mounting Method: Outside mount

Shade Style: Roman Classic Folded 4"

Components: Valance, RBS Mechanism, Chain Cord

Shade Dimensions: Blackout: 5'-5" W x 6'-1"

Fabric Details: *All fabric is inclusive.

Pattern: Barbados Spice 3 pass Blackout, Fire Rating: NFPA 701-2004, Content: 100% Polyester, Width: 57" OR EQUAL

All materials and methods of construction must comply with all local fire and life safety codes for use in hotels and other public spaces, and Home2 Suites Brand Standards.



GUESTROOM WINDOW SILL & ROLLER SHADE INSTALLATION GUIDE

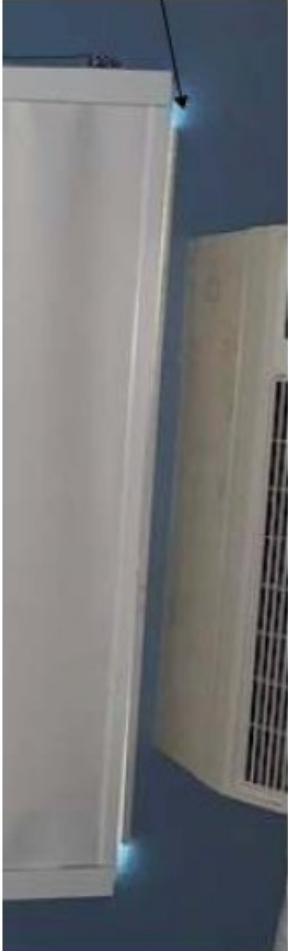
SEPTEMBER 2021



This visual is intended to supplement the Home2 Suites prototype drawings by illustrating the proper installation of the guestroom window treatment and sill. The top image illustrates the light-bleed issue that is occurring with incorrect installation, while the lower images illustrate the proper installation. To achieve black-out, the following requirements must be met:

- 1. the window sill must project 1.5" minimum beyond the face of the wall**
- 2. the roller shade side channels must extend to the bottom of the sill**
- 3. the roller shade side channels must sit flush against the ends of the sill**

INCORRECT:



Light-bleed occurring around the window sill

CORRECT:

